

71' TRISTAN RESIN FREESTANDING TUB

Cat. No.
RTRECN71



Features:

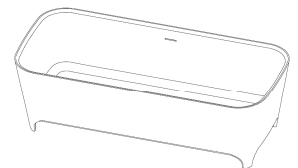
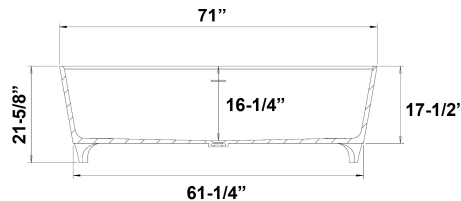
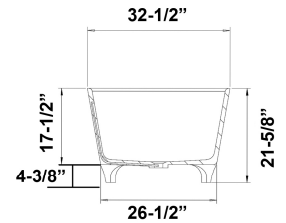
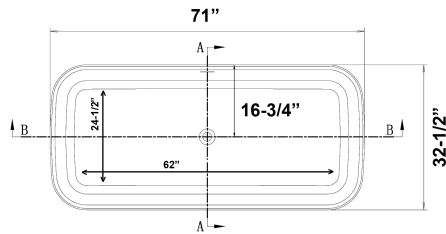
- ▶ Poly-resin blend is the same color throughout
- ▶ Available in gloss or matte finish
- ▶ Angle slope of tub: 10°
- ▶ No faucet holes
- ▶ Built-in overflow slot
- ▶ Includes white pop-up drain
- ▶ Tub is thoroughly inspected before shipment
- ▶ Not compatible with the air jet system

L: 71"
W: 32-1/2"
H: 21-5/8"

Water depth: 16-1/4" to top of tub
Water depth: 13" to overflow
Overflow hole diameter: 3"
Center drain to back of rim: 16-3/4"
Bottom of drain to back of rim: 3"
Bathing well to floor: 4-3/8"

Tub Colors:

WH Matte White
WHGL Gloss White



The following is recommended for RTRECN71-WH & RTRECN71-WHGL tubs:

- Faucets: part #7082 or 7088
- Rigid, freestanding supplies: part #4502
- Freestanding filler: part #7901, 7922 or 7952
(Does not need bath supplies)

Gallon Capacity: 97
Shipping Weight: 449 lbs.
Empty Weight: 374 lbs.
Filled Weight: 1179 lbs.

Dimensions of fixture are nominal and specifications subject to change without notice.

05/20/2020

P 847•244•1234

www.barclayproducts.com